

Autumn Farmhouse

Evening Star Quilt

by Kim Diehl



Finished Quilt Size: 64½" x 64½"

 Henry Glass & Co., Inc.



49 West 37th Street, New York, NY 10018

tel: 212-686-5194 • fax: 212-532-3525

Toll-free: 800-294-9495

www.henryglassfabrics.net

facebook

Autumn Farmhouse

Evening Star Quilt

Finished Quilt Size: 64½" x 64½"

MATERIALS

This quilt features prints from Kim Diehl's Autumn Farmhouse collection for Henry Glass Fabrics.

Yardages are based on a 42" width of useable fabric after prewashing and removing selvages. Fat quarters measure 18" x 21".



966-77
Teal tossed blooms
1¼ yards



967-88
Red floral
⅝ yard



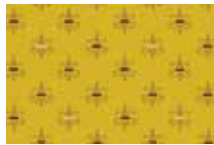
968-93
Taupey gray lacey vines
¾ yard



969-11
Aqua clover blossoms
⅜ yard



970-99
Black little dashes
2⅞ yards



971-44
Cheddar fleur de lis
½ yard



972-11
Aqua scatter garden
⅔ yard



973-30
Orange sprigged stripe
⅔ yard



974-88
Red pressed flowers
⅝ yard



975-66
Kiwi starberry sprigs
fat quarter



976-66
Kiwi meandering
pomegranates
⅜ yard



977-404
Gold starry vines
⅔ yard

Additional materials:

- 4 yards of fabric for backing (Kim suggests 972-11, aqua scatter garden)
- 74" x 74" square of batting
- Standard sewing and quilting supplies

CUTTING

Cut all pieces across the width of the fabric in the order given unless directed differently. WOF is defined as width of fabric.

From the black little dashes print (referring to the cutting diagram on page 3), cut:

- 1 strip, 6" x WOF; from this strip, cut:
 - 1 rectangle, 6" x 12"; cut this rectangle in half lengthwise to make 2 lengths, 3" x 12". Crosscut each length into 4 squares, 3" x 3" (total of 8)
 - 1 rectangle, 5½" x 20½"
 - 1 rectangle, 4½" x 8½"
- 3 strips, 5½" x WOF; from *each* strip, cut:
 - 1 rectangle, 5½" x 20½" (total of 4 with previously cut rectangle)
 - 2 rectangles, 4½" x 8½" (total of 7 with previously cut rectangle)
- 1 strip, 11" x 42"; from this strip, cut:
 - 2 squares, 11" x 11"; cut each square in half diagonally *once* to yield 2 triangles (total of 4)
 - 1 square, 10½" x 10½"
 - 1 rectangle 4½" x 8½" (total of 8 with previously cut rectangles)
 - 1 square, 5½" x 5½"
- 4 strips, 10½" x WOF; crosscut into 8 rectangles, 10½" x 20½"

- 1 strip 10½" x WOF; crosscut into 3 squares, 10½" x 10½" (total of 4 with previously cut square)
- 2 strips, 1½" x WOF; crosscut into 4 rectangles, 1½" x 20½"

Keep the black pieces organized by size. Reserve all black scraps.

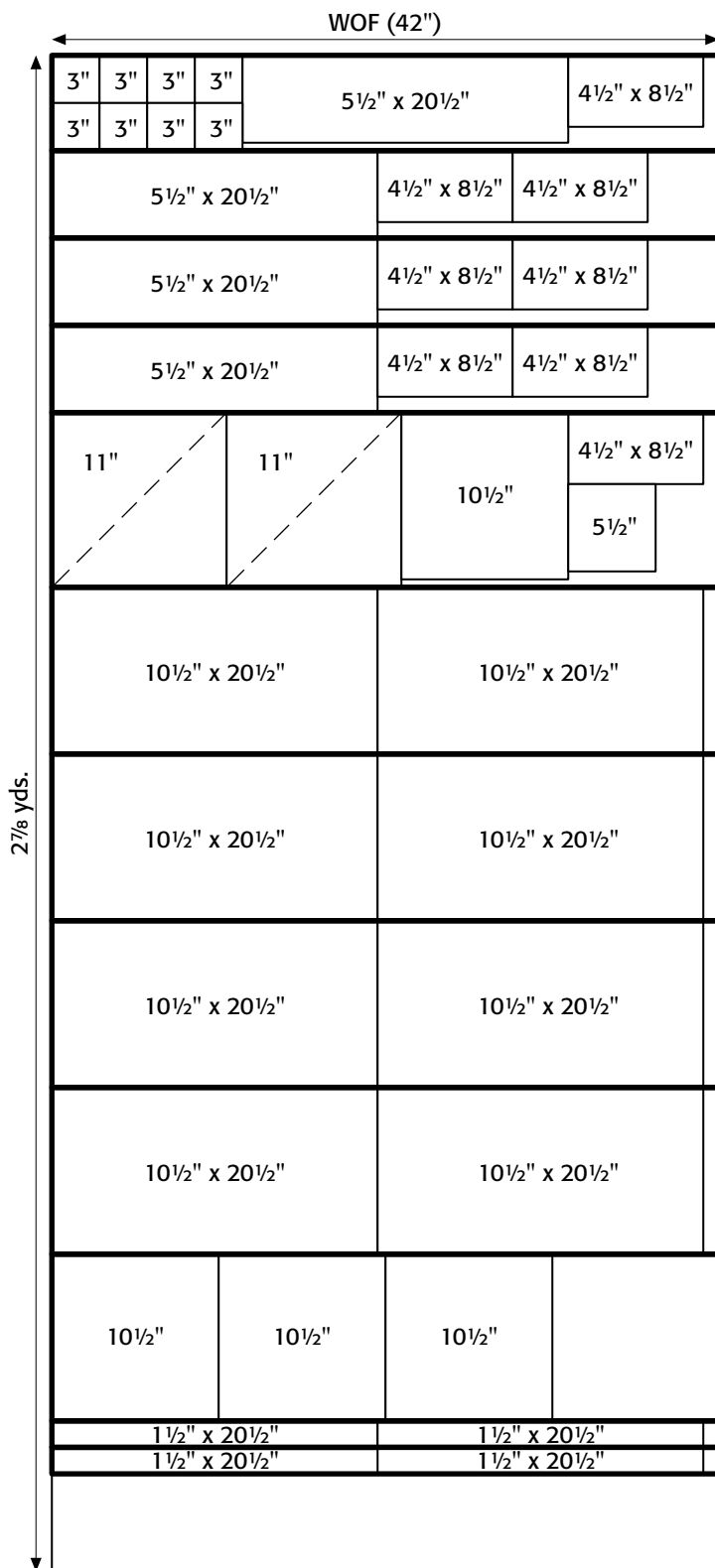
From the reserved black scraps, cut:

- 16 squares, 1½" x 1½"
- 16 rectangles, 1½" x 2½"

From the cheddar fleur de lis print, cut:

- 1 strip, 3" x WOF; crosscut into 4 rectangles, 3" x 5½", and 4 squares, 3" x 3"
- 2 strips, 5½" x WOF; crosscut into 2 rectangles, 5½" x 20½", and 2 rectangles, 5½" x 10½"

Cutting continued on page 3



Cutting diagram
for black little dashes print

From the gold starry vines print, cut:

2 strips, $10\frac{1}{2}$ " x WOF; crosscut into 4 squares,
 $10\frac{1}{2}$ " x $10\frac{1}{2}$ "
Reserve all gold scraps.

From the reserved gold scraps, cut:

32 squares, $1\frac{1}{2}$ " x $1\frac{1}{2}$ "
4 squares, $2\frac{1}{2}$ " x $2\frac{1}{2}$ "

From the kiwi starberry sprigs print, cut:

5 strips, $1\frac{1}{2}$ " x 21"; crosscut into 64 squares, $1\frac{1}{2}$ " x $1\frac{1}{2}$ "
1 strip, $2\frac{1}{2}$ " x 21"; crosscut into 8 squares, $2\frac{1}{2}$ " x $2\frac{1}{2}$ "

From the red floral print, cut:

2 strips, $1\frac{1}{2}$ " x WOF; crosscut into 16 squares,
 $1\frac{1}{2}$ " x $1\frac{1}{2}$ ", and 16 rectangles, $1\frac{1}{2}$ " x $2\frac{1}{2}$ "
1 strip, $4\frac{1}{2}$ " x WOF; crosscut into 3 rectangles,
 $4\frac{1}{2}$ " x $6\frac{1}{2}$ ", and 2 rectangles, $4\frac{1}{2}$ " x $10\frac{1}{2}$ "
1 strip, $4\frac{1}{2}$ " x WOF; from this strip, cut:
2 rectangles, $4\frac{1}{2}$ " x $10\frac{1}{2}$ " (total of 4 with previously
cut rectangles)
1 rectangle, $4\frac{1}{2}$ " x $6\frac{1}{2}$ " (total of 4 with previously
cut rectangles)
1 rectangle, $2\frac{1}{2}$ " x $10\frac{1}{2}$ "
1 strip, $2\frac{1}{2}$ " x WOF; crosscut into 3 rectangles,
 $2\frac{1}{2}$ " x $10\frac{1}{2}$ " (total of 4 with previously cut rectangle)
Keep the above pieces organized into a red floral
patchwork set.

From the red pressed flowers print:

Repeat the cutting outlined for the red floral print;
keep the pieces organized into a red pressed flowers
patchwork set.

From the taupey-gray lacey vines print, cut:

1 strip, 11" x WOF; from this strip, cut:
2 squares, 11" x 11"; cut each square in half
diagonally *once* to yield 2 triangles (total of 4)
1 square, $10\frac{1}{2}$ " x $10\frac{1}{2}$ "
1 strip, $10\frac{1}{2}$ " x WOF; crosscut into 3 squares,
 $10\frac{1}{2}$ " x $10\frac{1}{2}$ " (total of 4 with previously cut square)
Reserve the scraps of the taupey-gray print.

From the reserved taupey-gray scraps, cut:

4 squares, $2\frac{1}{2}$ " x $2\frac{1}{2}$ "

From the aqua scatter garden print, cut:

2 strips, $10\frac{1}{2}$ " x WOF; crosscut into 4 squares,
 $10\frac{1}{2}$ " x $10\frac{1}{2}$ "

From the orange sprigged stripe print, cut:

2 strips, $10\frac{1}{2}$ " x WOF; crosscut into 4 squares,
 $10\frac{1}{2}$ " x $10\frac{1}{2}$ "

Cutting continued on page 4

From the teal tossed blooms print, cut:

2 strips, 10½" x WOF; crosscut into 4 squares,
10½" x 10½"

Using the remaining print and the scraps left over after cutting the 10½" teal squares, cut enough 2½"-wide strips to make a 268" length of binding when joined together end to end.

From the aqua clover blossoms print, cut:

4 strips, 2½" x WOF; crosscut into 4 rectangles,
2½" x 30½"

From the kiwi meandering pomegranates print, cut:

4 strips, 2½" x WOF; crosscut into 4 rectangles,
2½" x 30½"

PIECING the Center Star Unit

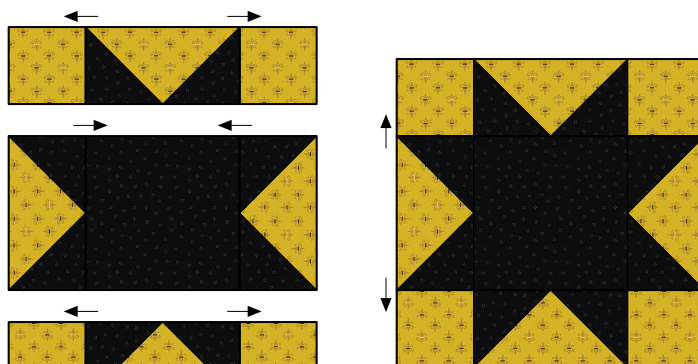
Sew all pieces with right sides together using a ¼" seam allowance unless otherwise noted. Press the seam allowances as indicated by the arrows or otherwise specified.

- 1 Select the eight black 3" squares, the black 5½" square, the four cheddar 3" x 5½" rectangles, and the four cheddar 3" squares. Use a pencil and an acrylic ruler to draw a diagonal sewing line from corner to corner on the wrong side of each black 3" square.
- 2 Layer a prepared black 3" square onto one end of a cheddar 3" x 5½" rectangle. Stitch the pair along the drawn diagonal line. Fold the resulting inner black triangle open, aligning the corner with the corner of the cheddar rectangle. Press. Trim away the layers beneath the top triangle, leaving a ¼" seam allowance. In the same manner, add a black mirror-image star-point triangle to the remaining end of the rectangle. Repeat to piece a total of four star-point units measuring 3" x 5½", including the seam allowances.



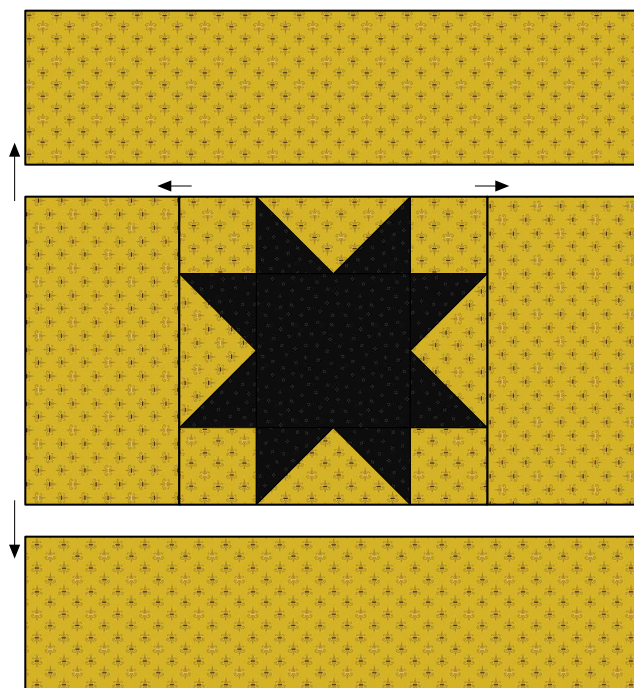
Make 4
star-point units,
3" x 5½".

- 3 Lay out the four star-point units, the black 5½" square, and the four cheddar 3" squares in three horizontal rows as shown. Join the pieces in each row. Press. Join the rows. Press. The pieced star unit should measure 10½" square, including the seam allowances.



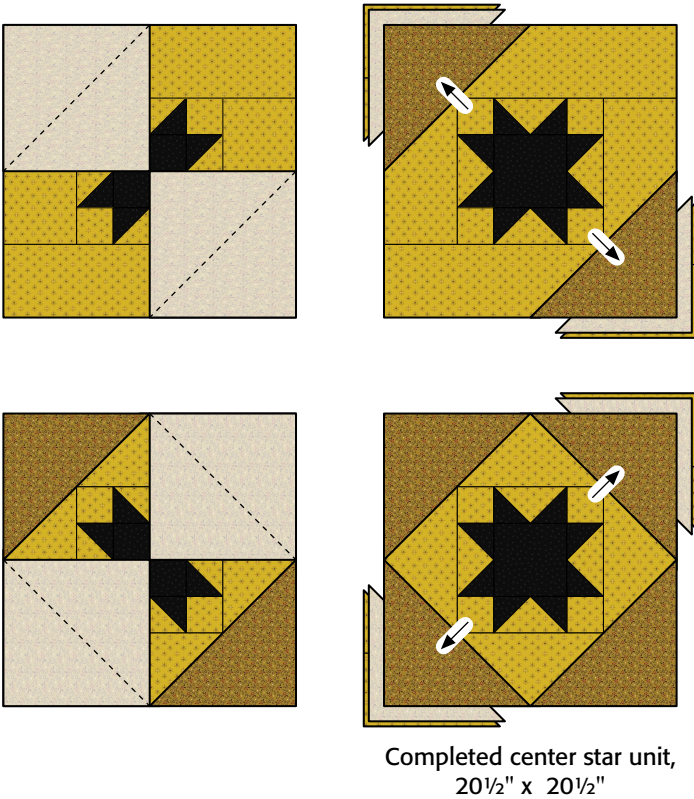
Star unit,
10½" x 10½"

- 4 Join a cheddar 5½" x 10½" rectangle to the right and left sides of the star unit. Press. Join a cheddar 5½" x 20½" rectangle to the top and bottom edges of the patchwork unit. Press. The pieced center star unit should measure 20½" square, including the seam allowances.



Pieced center star unit,
20½" x 20½"

- 5 Choose the four gold $10\frac{1}{2}$ " squares. Prepare each gold square with a diagonal sewing line as previously instructed. Layer a prepared gold square onto two opposite corners of the pieced center star unit as shown. Stitch, press, and trim as previously instructed. Repeat with the remaining corners to complete the $20\frac{1}{2}$ " center star unit.



PIECING the Small Star Units

- 1 Select all kiwi starberry $1\frac{1}{2}$ " squares and $2\frac{1}{2}$ " squares. Prepare each kiwi $1\frac{1}{2}$ " square with a diagonal sewing line as previously instructed.
- 2 From the red floral patchwork set, choose all rectangles, $1\frac{1}{2}$ " x $2\frac{1}{2}$ ", and all squares, $1\frac{1}{2}$ " x $1\frac{1}{2}$ ". Reserve the remaining red floral patchwork pieces for later use.
- 3 Using eight prepared kiwi $1\frac{1}{2}$ " squares, one kiwi $2\frac{1}{2}$ " square, four red $1\frac{1}{2}$ " x $2\frac{1}{2}$ " rectangles, and four red $1\frac{1}{2}$ " squares per unit, follow steps 2–3 of "Piecing the Center Star Unit" on page 4 to piece a total of four red floral small star units measuring $4\frac{1}{2}$ " square, including the seam allowances.



Make 4 red floral small star units, $4\frac{1}{2}$ " x $4\frac{1}{2}$ ".

- 4 Choose the red pressed flowers patchwork set. Using the remaining kiwi starberry $1\frac{1}{2}$ " squares and $1\frac{1}{2}$ " x $2\frac{1}{2}$ " rectangles, and the red pressed flowers $1\frac{1}{2}$ " squares and $1\frac{1}{2}$ " x $2\frac{1}{2}$ " rectangles, repeat the previous steps to piece four small red pressed flower star units measuring $4\frac{1}{2}$ " square, including the seam allowances. Reserve the remaining red pressed flowers patchwork pieces for later use.



Make 4 red pressed flowers small star units, $4\frac{1}{2}$ " x $4\frac{1}{2}$ ".

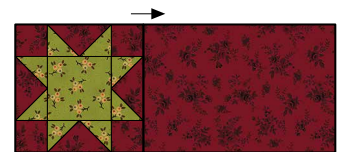
- 5 Select the gold starry vines $1\frac{1}{2}$ " squares and $1\frac{1}{2}$ " x $2\frac{1}{2}$ " rectangles, and the black $1\frac{1}{2}$ " x $2\frac{1}{2}$ " rectangles and $1\frac{1}{2}$ " squares. Repeat the previous steps to piece four small gold starry vines star units measuring $4\frac{1}{2}$ " square, including the seam allowances.



Make 4 gold starry vines small star units, $4\frac{1}{2}$ " x $4\frac{1}{2}$ ".

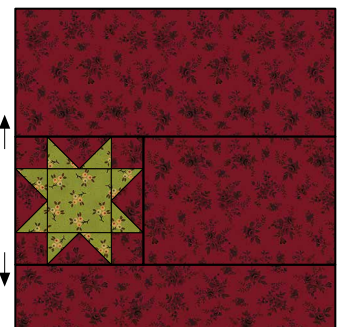
PIECING the Red Star-in-a-Star-Point Units

- 1 Select the pieces remaining in the red floral patchwork unit. Join one small red floral star unit to a red floral $4\frac{1}{2}$ " x $6\frac{1}{2}$ " rectangle as shown. Press. The pieced star unit should measure $4\frac{1}{2}$ " x $10\frac{1}{2}$ ", including the seam allowances. Repeat to piece a total of four star units.



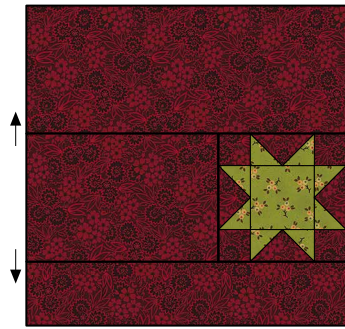
Make 4 units, $4\frac{1}{2}$ " x $10\frac{1}{2}$ ".

- 2 Lay out one red floral $4\frac{1}{2}$ " x $10\frac{1}{2}$ " rectangle, one pieced star unit from step 1, and one red floral $2\frac{1}{2}$ " x $10\frac{1}{2}$ " rectangle in three horizontal rows as shown. Join the rows. Press. Repeat to piece a total of four red floral star-in-a-star-point units measuring $10\frac{1}{2}$ " square, including the seam allowances.



Make 4 red floral star-in-a-star-point units, $10\frac{1}{2}$ " x $10\frac{1}{2}$ ".

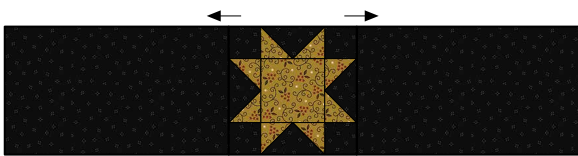
- 3 Using the pieces remaining in the red pressed flowers patchwork unit, and the small red pressed flowers star units, repeat steps 1–2 to piece four *mirror-image* red pressed flowers star-in-a-star-point units measuring 10½" square, including the seam allowances.



Make 4 red floral mirror-image star-in-a-star-point units, 10½" x 10½".

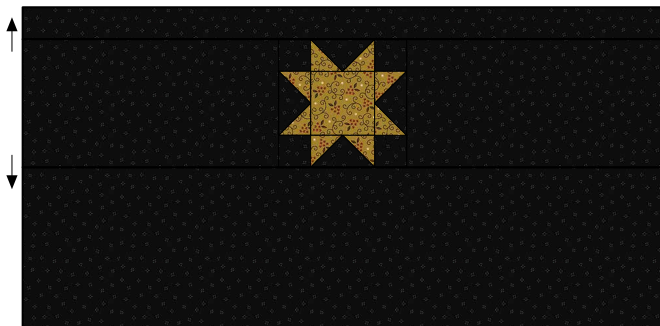
PIECING the Black Star-Point Background Units

- 1 Select the four small gold starry vines star units, all of the black 4½" x 8½" rectangles, all of the black 5½" x 20½" rectangles, and all of the black 1½" x 20½" rectangles. Join a black 4½" x 8½" rectangle to each side of a small gold star unit. Press. Repeat to piece a total of four black star-point background units measuring 4½" x 20½", including the seam allowances.



Make 4 units, 4½" x 20½".

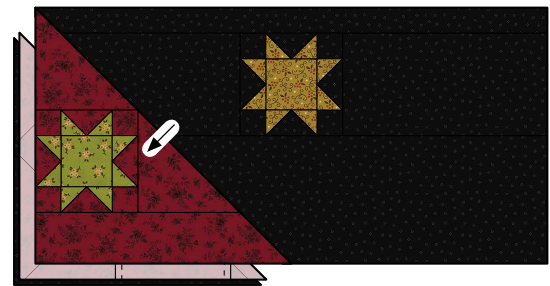
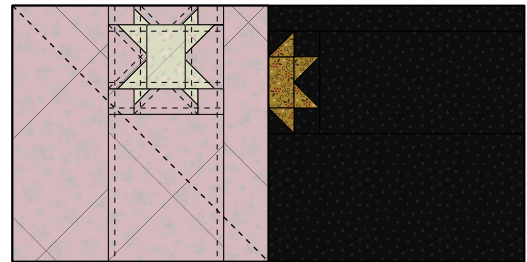
- 2 Lay out one black 1½" x 20½" rectangle, the pieced black star-point background unit from step 1, and one black 5½" x 20½" rectangle in three horizontal rows as shown. Join the rows. Press. Repeat to piece four black star-point background units measuring 10½" x 20½", including the seam allowances.



Make 4 black star-point background units, 10½" x 20½".

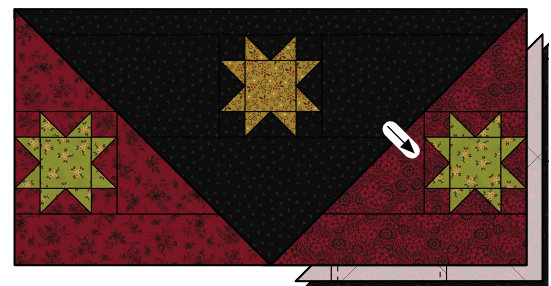
PIECING and ADDING the Border 1 Patchwork Units

- 1 Position a red floral star-in-a-star-point unit wrong side up as shown in the step 2 illustration. Use a pencil and an acrylic ruler to draw a diagonal sewing line from corner to corner on the wrong side of the unit as shown.
- 2 Layer the prepared red floral unit onto a black star-point background unit as shown. Stitch, press, and trim, as previously instructed to make a partially-pieced star-point unit.



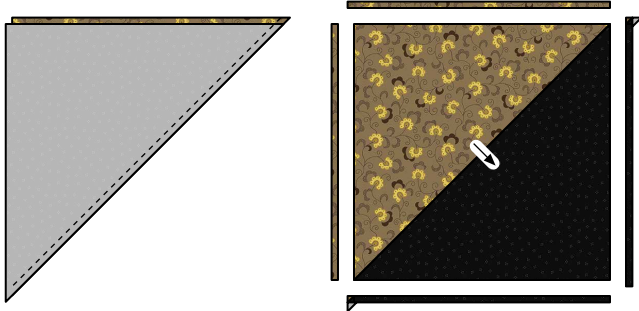
Partially pieced star-point unit, 10½" x 20½".

- 3 Lay out and prepare a red pressed flowers mirror-image star-in-a-star-point unit wrong side up on the remaining end of the step 2 unit, ensuring that it is resting in a mirror-image position from the first unit stitched in step 1. Draw a diagonal sewing line as previously instructed. Next, stitch, press, and trim as instructed for the first red star point. Repeat steps 1–3 to complete four border 1 star-point units measuring 10½" x 20½", including the seam allowances.



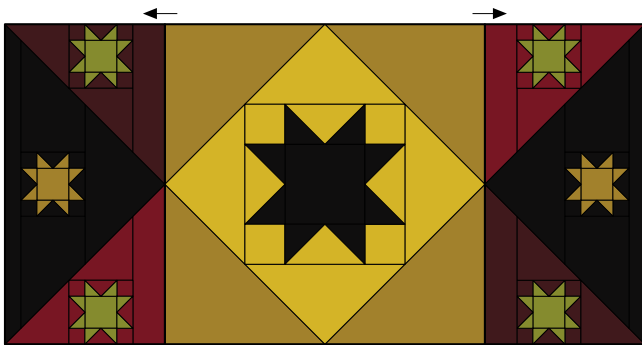
Completed border 1 star-point unit, 10½" x 20½".

- 4 Join a taupey-gray lacey vines and a black 11" triangle along the long diagonal edges. Press. Use a large square acrylic ruler and a rotary cutter to trim the unit to measure 10½" square, removing the dog-ear points in the same step. Repeat to piece a total of four black-and-gray half-square-triangle-units.



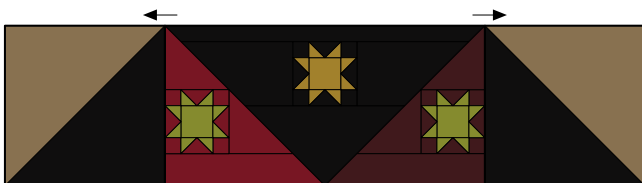
Make 4
black-and-gray units,
10½" x 10½".

- 5 Join a step 3 border 1 star-point unit to the right and left side of the center star unit. Press. This border 1 patchwork unit should now measure 20½" x 40½", including the seam allowances.



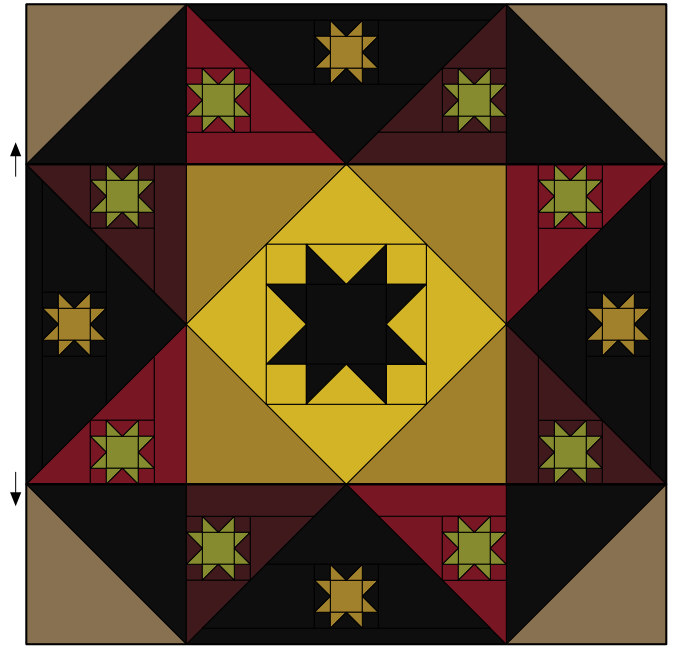
Center star unit with
right and left border units,
20½" x 40½"

- 6 Join a black-and-gray half-square-triangle-unit to each end of the two remaining border 1 star-point units as shown. Press. These units should now measure 10½" x 40½", including the seam allowances.



Make 2
border 1 top/bottom border units,
10½" x 40½".

- 7 Join the border units completed in step 6 to the top and bottom edges of the step 5 unit. Press. The quilt top with border 1 should now measure 40½" square, including the seam allowances.



Quilt center
with border 1,
40½" x 40½"

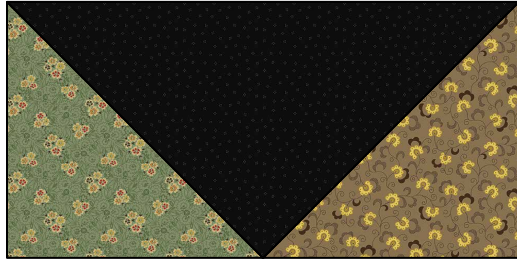
PIECING and ADDING *Border 2*

- 1 Select each of the orange, teal, aqua, and taupey-gray 10½" squares. Prepare each square with a drawn diagonal sewing line as previously instructed.
- 2 Choose the orange and teal prepared 10½" squares and four black 10½" x 20½" rectangles. Layer, stitch, press, and trim the orange and teal squares as previously instructed to make four orange/teal star-point units, positioning the prints as shown.



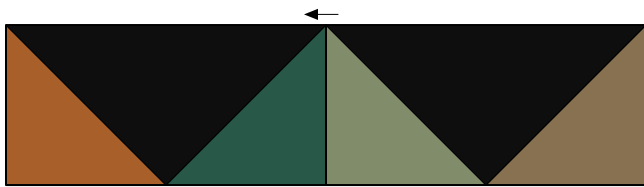
Make 4 units,
10½" x 20½".

- 3 Choose the prepared aqua and taupey-gray $10\frac{1}{2}$ " squares and four black $10\frac{1}{2}$ " x $20\frac{1}{2}$ " rectangles. Repeat step 2 to piece four aqua/taupey-gray star-point units, positioning the prints as shown.



Make 4 units,
 $10\frac{1}{2}$ " x $20\frac{1}{2}$ ".

- 4 Referring to the illustration, join an aqua/taupey-gray star-point unit and a step 2 orange/teal star-point unit along the short ends as shown. Press. Repeat to piece a total of four double-star-point units measuring $10\frac{1}{2}$ " x $40\frac{1}{2}$ ", including the seam allowances.



Make 4 units,
 $10\frac{1}{2}$ " x $40\frac{1}{2}$ ".

- 5 Referring to the quilt pictured on the handout cover, join a double-star-point unit to the right and left side of the quilt top. Press the seam allowances away from the quilt center.
- 6 Join a black $10\frac{1}{2}$ " square to each end of the remaining double-star-point units. Press the seam allowances away from the black squares. Join these completed patchwork rows to the remaining sides of the quilt top. Press the seam allowances away from the quilt center. The quilt top with border 2 should now measure $60\frac{1}{2}$ " square, including the seam allowances.

PIECING and ADDING Border 3

- 1 Join an aqua clover print and a kiwi meandering pomegranates print $2\frac{1}{2}$ " x $30\frac{1}{2}$ " strip to make one long strip. Press the seam allowances toward the kiwi print. Repeat to piece a total of four aqua/kiwi border 3 strips measuring $2\frac{1}{2}$ " x $60\frac{1}{2}$ ", including the seam allowances.
- 2 Referring once again to the pictured quilt, join a border strip pieced in step 1 to the right and left side of the quilt top. Press the seam allowances toward the border 3 strip.
- 3 Join a taupey-gray $2\frac{1}{2}$ " square to each end of the remaining two border strips from step 1. Press the seam allowances away from the gray squares. Join these pieced strips to the remaining sides of the quilt top as shown in the pictured quilt. Press the seam allowances toward the newly added strips. The pieced quilt top should measure $64\frac{1}{2}$ " x $64\frac{1}{2}$ ", including the seam allowances.

COMPLETING *the Quilt*

Layer and baste the quilt top, batting, and backing. Quilt the layers. Join the teal binding strips to make one length and use it to bind the quilt.

Every effort has been made to ensure that all projects are error free. All the information is presented in good faith, however no warranty can be given nor results guaranteed as we have no control over the execution of instructions. Therefore, we assume no responsibility for the use of this information or damages that may occur as a result. When errors are brought to our attention, we make every effort to correct and post a revision as soon as possible. Please make sure to check www.henryglassfabrics.com for pattern updates prior to starting the project. We also recommend that you test the project prior to cutting for kits. Finally, all free projects are intended to remain free to you and are not for resale or other forms of distribution.



©2024 Kim Diehl